

# LSE RadiusGINA

## Strong Authentication with One Time Passwords (OTP)

Mobility and security are the important challenges when integrating a terminalserver environment.

The **LSE RadiusGINA** improves security when authenticating to a terminalserver e.g. over an unsecure internet connection.

### One Time Password (OTP) – authentication



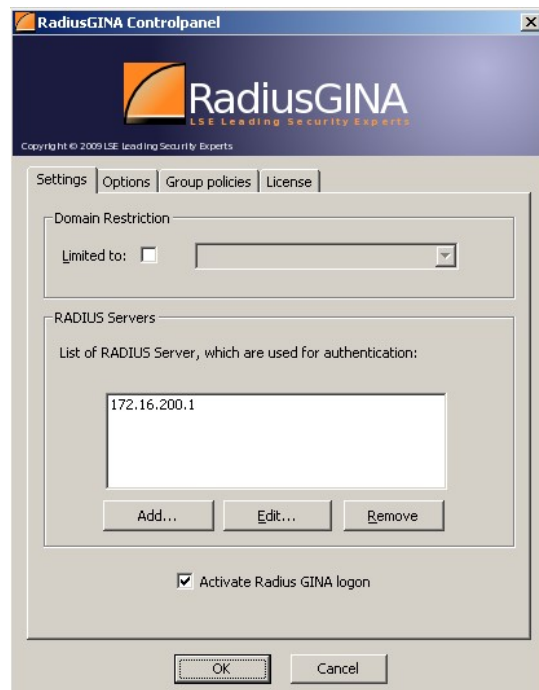
By completely replacing the Microsoft Logon with the **LSE RadiusGINA**, your terminalserver logon or logon to Windows XP is enhanced by an authentication based on the radius protocol.

Using RADIUS both simple and complex logon scenarios are viable. Redundancy and load balancing can be implemented.

Combining the **LSE RadiusGINA**, the Aladdin Token Management System or the Kobil SecOVID Server you get a well manageable One Time Password solution for your terminalserver environment or your Windows XP clients.

### An overview to the LSE RadiusGINA

- GINA-Replacement for Windows XP and Windows Server 2003
- May be run as full GINA replacement or in GINA chaining mode (pre-authentication)
- One Time Passwords with eToken NG-OTP, eToken PASS, Safeword Alpine, Kobil SecOVID or LSE MobileOTP
- RADIUS support
- Microsoft IAS support
- Multi-Domain support
- Multi-server operations
- Round Robin/realms
- Load balancing/redundanz
- Support for domain wide rollout
- Supports administrative override to authenticate as a second user
- Windows 7 and Windows Server 2008 are supported by the successor product **LSE Radius Credential Provider**



LSE Leading Security Experts GmbH  
Robert-Koch-Straße 9  
D-64331 Weiterstadt, Germany  
+49 (0) 6151/9067-0  
<http://www.lsexperts.de>  
[info@lsexperts.de](mailto:info@lsexperts.de)

LSE is a company of

**max 21**  
Unternehmensgruppe